

## Transportation



### Transportation

#### 1 Using the T-Money Transportation Card

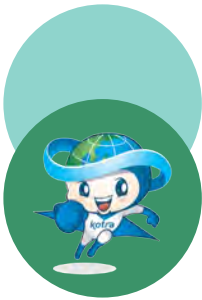
##### 1-1. T-money Cards Accepted Nationwide

Nationwide T-money cards, used to pay public transportation fare, can be purchased and recharged at more than 30,000 vendors across the country including subway stations and convenience stores.

In addition to bus and subway fares, the card can be used to pay train fare, taxi fare, inter-city bus fare and highway tollgate fee. Also, the card can be used at convenience stores, bakeries and fast food joints. For a list of T-money affiliated stores and shops, visit the T-money card website ([www.t-money.co.kr](http://www.t-money.co.kr), Korean only). In addition to the standard card form, the T-money card comes in various forms such as key chains and cell phone charms.

The T-money transportation card is sold in various types, including the regular type, accessory type, smartphone USIM type, etc.





### 1-2. CITYPASS+

The CITYPASS+ card, which bears instructions on how to use the card in English, Chinese and Japanese, is a T-money card with extra benefits for tourists and can be used in Seoul and other parts of the country. The card comes with discount coupons that can be used at tourist attractions, performance halls and restaurants in Seoul so be sure to make the most of it during your trip.



### 1-3. M-Pass, public transport season ticket for foreigners

The M-Pass card, introduced in December 2011, is a public transportation card designed for foreign visitors that allows card holders to take up to 20 rides a day on the Seoul subway system, the Airport Railroad Express, the Incheon subway system and the Seoul metropolitan area bus system. Foreigners can purchase and return M-Pass cards at the Seoul Travel Information Center located in the Incheon International Airport, Seoul Global Culture and Tourism Center (Myeongdong), and Gangnam Tourist Information Center (Gangnam). Also, the card can be topped up with cash to pay taxi fares or purchase goods at T-money affiliated stores.



## ■ How to Use the Card

The card can be used on Seoul's subway lines 1 to 9, the Incheon subway system, the Airport Railroad Express and buses in the greater Seoul area (Shinbundang Line, AREX Express Trains, inter-city express buses are not included).

※To use the card to pay fares for buses, airport limousine buses or taxis, add money to the card and use its T-money functions. An amount from 1,000 won to 90,000 won can be charged on the card at a time, and the maximum amount that can be charged is 500,000 won.

### ■ Card Types

Period	1 Day Pass	2 Day Pass	3 Day Pass	5 Day Pass	7 Day Pass
Fare	10,000 won	18,000 won	25,500won	42,500 won	59,500 won

※A deposit of 5,000 won is required to purchase the card. When the card is returned, a transaction fee of 500 won is deducted and 4,500 won will be refunded.

※From the date the pass is issued, the expiration time is 24:00 (midnight) of the expiration date.

### ■ Purchase and Refund

Purchase	07:00-22:00	Tourist information centers located next to exit 5 and 10 on 1F of Incheon International Airport (Contact: 82-32-743-3270/3272), Seoul Global Culture and Tourism Center (Myeongdong) (Contact: 82-2-3789-7961)
	07:00-22:00	
Refund	22:00-07:00	GS25 convenience store across exit number 10 on 1F of Incheon International Airport.

### ■ Discount Coupons

<b>N Seoul Tower (10% off)</b> <b>Jeongdong Theater (10% off)</b> <b>Lotte World (10% off)</b> <b>Sachoom Dance Musical (20% off)</b>	Sejong Center for the Performing Arts (10% off) Dragon Hill Spa (2,000 won off) Myeongdong Hanjeungmak (30% off) Myeongdong modpop (20% off basic course+meal voucher)
--	---

## 2 Postpaid Transportation Card



Unlike the T-money card that has to be topped up beforehand, you can pay your public transportation fare afterward with a credit card. A credit card can be used as a postpaid transportation card if the postpaid transportation card function is added.

The T-money card may be a better choice, however, for foreign visitors without a credit card issued by a Korean bank.

## Types of public transportation



### 1 Subway

Subway systems are available in Korea, in Seoul and the metropolitan area, Busan, Daegu, Gwangju and Daejeon. The fare system is the same for all of these subway systems (purchase ticket → place the ticket on the reader → board/disembark subway → place the ticket on the reader) except for the single trip ticket whose price varies somewhat.

#### ■ Buying a Subway Ticket

- **Seoul Metropolitan Area: Single-trip cards**

[Single-trip card] Choose your destination at a transportation card vending/top-up machine and enter the fare plus a deposit (500 won) to get a single-trip transportation card. At the end of the transit, enter the single-trip card into a transportation card vending machine at your destination station for refund of the deposit.

As of June 27, 2015, the base fare of Seoul, Gyeonggi, and Incheon subways has been raised by 200 won from 1,050 won to 1,250 won. An early morning fare scheme offering a discount of 20 percent for the first train of the day until 6:30 am is applied to the metropolitan subway and Incheon subway (discount does not apply to bus-subway transfers). Senior citizens aged 65 or older are entitled to free rides, and the benefits apply to foreigners with permanent residency as well.

- **Busan: Regular tickets and multi-ride cards**

Tickets may be purchased at a vending machine within a subway station for both regular tickets and multi-ride cards. Regular tickets can be for a one way trip or a round trip. The fare varies depending on the destination, travelers must choose a line from the map at the top or a section from the right-hand side. Multi-ride cards are available for one day, seven days or one month validity.

- **Gwangju: Single-trip tickets**

Single-trip tickets have no expiry date and may be used for all rides made within two hours of the time of initial validation.

- **Daegu and Daejeon: Single-trip token-style tickets**











## Tip

- To switch subway lines, follow the transfer sign, indicating the line number.
- When riding to a destination farther than you have initially paid for, simply pay for the extra-fare using a ticket vending machine or to a subway staff.
- Transfer discounts given when switching to another public transport system are not available for travelers using a single-trip card.
- No deposit (500 won) is required when purchasing a subway ticket in places other than Seoul.

## 2 City Bus

### • Types of Buses (Seoul)

City buses currently circulating in Seoul are new models launched in July 2004. Bus stops now match the color of the bus, making it easier to spot the stop for the right bus.

Blue (trunk route) buses	Green (branch route) buses	M BUS
		
Blue buses are long-distance trunk-line buses serving areas within the city of Seoul.	These branch-line buses provide linkage to subway stops and serve areas within a neighborhood.	The M BUS is an express bus system that serves a smaller number of stops compared to other buses. No standing passengers are allowed on this bus.
Yellow (circular route) buses	Red (wide area) buses	Inter-city express bus
		
Linking areas on the outskirts of the city, yellow buses meet diverse transportation demands in the city of Seoul.	These express buses ensure connection between Seoul and its surrounding cities in the metropolitan area.	These long distance express buses were specifically designed to connect metropolitan areas with nearby satellite cities. No standing passengers are allowed on this bus.

### ■ Bus Fares in Major Cities as of Dec. 2016 (Unit: won)

Type	Payment method	Seoul	Gyeonggi	Incheon	Daejeon	Daegu	Busan	Ulsan	Gwangju
City Bus	Card	1,200	1,250	1,250	1,250	1,100	1,140	1,140	1,100
	Cash	1,300	1,300	1,300	1,400	1,200	1,300	1,200	1,200
City Express Bus	Card	2,300	2,050	1,650	-	1,450	1,700	1,500	1,700
	Cash	2,400	2,100	2,400	-	1,600	1,800	1,700	1,800
M Bus	Card	2,400	2,400	2,600	-	-	-	-	-
	Cash	2,500	2,500	2,900	-	-	-	-	-
Inter-City Express Bus	Card	2,300	2,400	1,650	-	-	-	1,880	-
	Cash	2,400	2,500	2,400	-	-	-	2,100	-

※Bus fare change (applied June 27, 2015): Blue/Green bus fare-1,200 won, Late-night bus fare-2,150 won, Local bus fare-900 won

※In Seoul, a 20 percent morning discount is applied to all buses excluding the late-night bus from the first departure until 6:30 am, for a single ride using a card.

※Seoul metropolitan city late-night bus operation: From midnight to 4 am (from the point of departure)

※In Gyeonggi-do, an early morning fare system that offers a 400 won discount from the base fare is applied to the inter-city express bus from the first departure until 6:30 am, for single rides paid with a transportation card.

\*National bus transportation association ([www.bus.or.kr](http://www.bus.or.kr))

### ■ A Simplified Transit Fare System for the Seoul Metropolitan Area

Under this simplified transit fare system for the capital area (Seoul Metropolitan City, Gyeonggi-do, Incheon Metropolitan City), travelers no longer pay separately for each ride with different transport means, from the subway to city buses and community buses. Regardless of transportation system and the number of transfers made between the systems, travelers always pay for the total distance traveled, as long as they use a transportation card. This represents significant savings for most.

#### • Transfer trips (distance-metered fare)

In this fare scheme for trips involving multiple transfers between different transportation systems, a basic fee is charged, based on the transportation means with the highest basic fee, and if the total distance traveled exceeds the distance listed below, an extra-fare of 100 won is charged for every 5km in excess.

<b>Seoul Metropolitan Area</b>	Eligible travelers	Travelers using a T-money card or a postpaid transportation card
	Maximum time between two rides	Free transfer within 30 minutes of unboarding (up to 1 hour between 21:00 and 7:00)
	Number of transfers	Up to four transfers (up to five different transportation means)
<b>Busan</b>	Eligible travelers	Travelers using a T-money card, Hanaro card, Mybi card, Cashbee card or a postpaid transportation card
	Maximum time between two rides	Free transfer within 30 minutes of unboarding
	Number of transfers	<ul style="list-style-type: none"> <li>• May be used for changing means of transportation up to three times.</li> <li>• Free transfer system: Busan Metropolitan City will implement a free public transport transfer system from July 1, 2015 in order to promote the use of public transport and to lessen the economic burden on citizens using the public transport.</li> <li>- Implementation date: From the first departure made on July 1, 2015</li> <li>- Applicable transportations: Busan Metropolitan City intra-city bus, urban railway, local bus</li> </ul>
<b>Daejeon</b>	Eligible travelers	Travelers using a transportation card
	Fare discounts	Subway (section 1) and community shuttle: Transfer discount Subway (section 1) and city bus: Free transfer
	Maximum time between two rides	Free transfer within 30 minutes of unboarding (60 minutes after unboarding for transportations with service interval of 16 minutes or longer)
	Number of transfers	Up to three transfers (only one transfer to the subway)
<b>Gwangju</b>	Eligible travelers	Travelers using prepaid card affiliated with the Hanpay card, Mybi card or the Gwangju bank, and travelers with a credit card with a transportation card function.
	Applicable transfer type	Transfer between the subway (section 1) and city bus
	Maximum time between two rides	Free transfer within 30 minutes of unboarding (no limit on the number of transfers)
<b>Daegu</b>	Eligible travelers	Travelers using pre-paid cards such as the TopPass card and Daegyeong transportation card, and travelers with a post-paid card such as the KB Card, BC Card, Sinhan Card, Samsung Card and KEB Hana Card
	Applicable transfer types	Between the subway, Daegu city bus and Gyeongsan city bus (except buses serving Yeongcheon, Goryeong and Seongju)
	Maximum time between two rides	Free transfer within 30 minutes of unboarding
	Number of transfers	Up to two transfers (up to three transportation means)

- ※Transfer trip discounts do not apply to transfers within the same bus route or two successive subway rides.  
 ※No discount for regional transit buses (including airport bus) or Incheon International Airport Railway trips.  
 ※On Jul. 16, 2014, a 'no-standing' policy was imposed on inter-city express buses (including airport limousines) in the Seoul metropolitan area.



## Tip How to pay for multiple passengers

You can pay for more than one person with your T-money card when you go on a bus ride. Just tell the bus driver the number of people you will be paying for with your transportation card before you use the reader. Remember, if you transit onto another bus, you must pay for the same number of passengers as your first trip for the transit discount to apply. Note that you cannot pay for multiple people on the subway.



## Tip Using public transport with smartphone apps

Smartphone apps not only show the routes of all modes of public transport including subway lines and bus services, but also display the estimated arrival times and departure intervals. Though it varies by app, some apps allow you to search routes from the starting point to the destination and offer convenient features such as 'setting arrival reminders'.

### ■ Seoul Metro Navigation

This app displays all the subway routes of Seoul and offers many features including a search function for the fastest, shortest and least number of transfer routes and their travel times, subway station timetables, time calculation for last train, arrival reminders, and many others. The app is also offered in English as well.

### ■ Korea Subway

This app can be displayed in simplified/traditional Chinese, English and Japanese and provides subway maps of Seoul, Busan, Daegu, Daejeon, and Gwangju. It also provides plenty of useful features for travelers such as information on hotspots near subway stations, a traveler chat service which allows travelers to share information with each other, and a subway map that displays only the major subway stations popular among travelers.

### ■ BP LINE

This app enables the user to check information on all the subway, bus, KTX train and regular train services around the country. It offers many features such as route search, express train timetables, high resolution subway maps, and bus travel/arrival time search. The timetables for subways, buses, and trains are kept updated automatically even if the user does not manually update them.

### 3 Taxi



#### • International Taxi

Seoul city-designated taxi service for international residents of Seoul or international visitors to Seoul.

<b>Reservation</b>	Reservations are required and can be made by calling 82-1644-2255 or visiting the International Taxi website ( <a href="http://www.intitaxi.co.kr">www.intitaxi.co.kr</a> ). Cabs on stand-by, if available, are sent to customers without a reservation.
<b>Fare</b>	Section-based, metered or rental rates depending on the case
<b>Types</b>	Mid-size taxi, Deluxe taxi: up to 5 passengers Jumbo-size taxi: 6 – 9 passengers
<b>Why International Taxi?</b>	<ul style="list-style-type: none"> <li>- The selection and training of drivers as well as the fare schedule and the operation of the call center are managed directly by the Seoul city government.</li> <li>- Drivers and call center staff trained and tested for proficiency in major languages.</li> <li>- Information service providing tips to international residents on living in Seoul, including how to use the airports, touring Seoul and doing business in Korea.</li> <li>- Flat rates for trips between the Incheon International Airport and designated areas of Seoul.</li> <li>- Information desks and pick-up locations at the Incheon International Airport and the Gimpo Airport.</li> <li>- Major credit cards (Visa, Master, JCB, Amex) and T-money card accepted.</li> </ul>



#### • Deluxe Taxi

These black taxi cabs with a yellow stripe, while more comfortable and providing better services than regular taxis, are slightly more expensive.



#### • Regular Taxi

Many of them have a silver body with white or blue stripes, but many of the newer taxis are orange with a white stripe. The basic charge is 3,000 won in Seoul. A 20 percent night time surcharge is applied to the basic fare from midnight to 4:00 A.M.

#### • Call Taxi

These taxis can be dispatched by phone, which is very convenient if you are in an area with few taxis or when it is late at night. They are identical to regular taxis in appearance, and the fare is the same as well. The fare is the same as a regular taxi fare; an intercity fare is applied once the taxi travels out of the si (city) or gun (district), and an additional call charge of 1,000 won may be imposed.



#### • Kakao Taxi

Available for convenient use anywhere in Korea, even if you do not have a call taxi number or find it difficult to explain your location at an unfamiliar place. The fare is the same as a regular taxi fare, and there is no call charge.

#### ■ How to use

PLAY store ► Download Kakao Taxi application ► Login to your Kakao account ► Set your place of departure and arrival ► Call

## 4 Express Bus



Express buses, which are less pricey than the KTX, are good alternatives for a long-distance trip. There are two types of express buses: regular express bus and deluxe express bus. Deluxe express buses seat less passengers than the regular ones. The seats are wider and more comfortable and the buses are equipped with a satellite TV screen.

Tickets may be purchased in advance, online at the express bus ticketing website. Check the terminal beforehand, as it varies depending on the destination. Gyeongbu and Yeongdong line buses depart from the Seoul Express Bus Terminal, and Honam line buses, bound for Gwangju or Jeonju, depart from the Central City Terminal. Most buses bound for places in eastern Korea, like Gangwon-do cities, depart from the Dong Seoul Express Bus Terminal, and many Chungcheongdo-bound buses from the Seoul Nambu Terminal.

#### • Seoul Express Bus Terminal (Gyeongbu Line, Yeongdong Line)

Add: 194, Sinbanpo-ro, Seocho-gu, Seoul (Subway Lines 3, 7 & 9, Express Bus Terminal station)

Tel: 82-1688-4700 Web: [www.terminal.co.kr](http://www.terminal.co.kr)

#### ■ Main Routes

<b>Gyeonggi Province</b>	Yongin, Icheon, Yeosu, Pyeongtaek, Anseong
<b>Gangwon Province</b>	Gangneung, Donghae, Samchok, Sokcho, Yangyang, Wonju (Hoengseong)
<b>Chungcheong Province</b>	Cheonan, Asan (Onyang), Jochiwon, Geumsan, Sejong city, Cheongju, Gongju, Government Complex-Daejeon
<b>Chungcheong Province</b>	Busan (Seobusan), Daegu, Sangju, Gimcheon, Gumi (Hwanggan), Yeongcheon, Gyeongju, Pohang, Ulsan, Gimhae, Jeoncheon, Jinju, Masan, Changwon, Tongyeong, Sunsan, Ginseng land

• Central City Bus Terminal (Honam Line)

Add: 176, Sinbanpo-ro, Seocho-gu, Seoul (Subway Lines 3 & 7, Express Bus Terminal station)

Tel: 82-2-6282-0114 Web: [www.hticket.co.kr](http://www.hticket.co.kr)

■ Main Routes

Jeolla Province	Gangjin, Goheung, Gokseong, Gwangju, Gimje, Naju, Namwon, Nokdong, Neungju, Damyang, Mokpo, Muan, Beolgyo, Boseong, Bongdong, Buan, Samho, Sunchang, Ancheon, Aetongri, Yeosu, Yecheon, Yeonggwang, Yeongsanpo, Yeongam, Okgwa, Wando, Wanju, Iksan, Jangseong, Jangheung, Jeonbuk Gwangjin, Jeonbuk Hyeoksin, Jeonju, Jeongeup, Jido, Jindo, Hampyeong, Haenam, Haejae, Local Government Officials Development Institute, Hwasun, Heojin
Chungcheong Province	Goesan, Gunsan, Gijisi, Kkotji, Naju, Namwon, Naepo, Nonsan, Dangjin, Deoksan Spa, Munjang, Boryeong (Daechon), Boeun, Hongseong, Heungdeok, Bukcheongju, Seosan, Songnisan, Anmyeondo, Yeonmudae, Yesan, Uncheon, Yuseong, Jeongsan, Jeongan Resting Stop, Jeungpyeong, Cheongyang, Cheongju International Airport, Taean
Gyeongsang Province	Andong, Yeongju, Yecheon, Onjeong, Uljin, Punggi
Gangwon Province	Sincheolwon, Cheolwon, Yeongwol, Chuncheon, Pocheon, Hongcheon



## 5 Train

There are three types of trains varying in speed: KTX, Saemaeul and Mugunghwa. KTX trains are currently the fastest, with the travel time between Seoul and Busan about 2 hours and 50 minutes. The Saemaeul is the second fastest train, with 4 hours and 30 minutes, and next is Mugunghwa, which takes 5 hours and 30 minutes. Timetables, routes and stations and fare information may be checked online at the KORAIL website ([www.korail.com](http://www.korail.com)).



### ■ Ticket Reservation and Return

<b>Ticket Reservation</b>	<a href="http://www.letskorail.com">www.letskorail.com</a> , Korail Talk (application), ticket machine, station (excluding subway stations), authorized ticket retail store, internet or railroad customer center (82-1544-7788, 82-1544-8545, English Service: 82-1599-7777)
<b>Reservation Period</b>	Tickets can be reserved and purchased from one month before date of departure up to 20 minutes before the train departure time (five minutes before train departure time when using Korail Talk).
<b>Payment/Ticket Issuance</b>	<ul style="list-style-type: none"> <li>- Payment can be made with credit card, reward points, and cash/credit transfer (only when using the website).</li> <li>- Monthly credit card installment plan may be used for payments of 50,000 won or more.</li> <li>- After payment is made, the ticket can be issued through a smartphone, self- printing (home ticket) or SMS.</li> </ul>
<b>Ticket Return</b>	<ul style="list-style-type: none"> <li>- A ticket can be returned through the Korail website (home ticket, SMS ticket, smartphone ticket) or Korail Talk (smartphone ticket) before the time of departure stated on the ticket.</li> <li>- If the train departure time has passed, the ticket must be returned at a station.</li> <li>- A ticket cannot be returned after the train has arrived at the arrival station stated on the ticket.</li> <li>- When a purchased ticket is returned, a return fee will be charged based on the time of return.</li> <li>- Returning a ticket through the automated reply system (82-1544-1188) is not the same as requesting a return by calling the Korail customer center representative.</li> <li>- Standard station counter fee is charged when returning a ticket by calling the customer center.</li> </ul>

### • Checking the Ticket

After purchasing the ticket, check the ticket to make sure all the information on it (date and time of departure, departure and arrival stations, etc.) is correct.



- |                     |                     |
|---------------------|---------------------|
| ① Departure station | ⑦ Coach No.         |
| ② Arrival station   | ⑧ Ticket issuer     |
| ③ Time of departure | ⑨ Ticket refund No. |
| ④ Time of arrival   | ⑩ Amount paid       |
| ⑤ Type of train     | ⑪ Seat No.          |
| ⑥ Train No.         |                     |
- (Odd numbers-southbound,  
even numbers – northbound)

### • Boarding

The train information is displayed on the LED board screen, 15 minutes before the departure time (trains for which boarding has already begun has a blinking red light at the upper right corner). Enter the boarding area beyond the gate and go to the platform indicated on the LED board screen to board the train.



## Tip Incheon Airport Railroad Express AREX

### • Express Train

Route: Seoul Station ↔ Incheon International Airport (No stops in between)

### ■ Route and fare

Duration	First Train / Last Train		Discounted One-way Fare
43 minutes	Bound for Incheon International Airport	05:20 / 21:40	Adults 8,000 won
	Bound for Seoul Station	05:20 / 21:40	Children 6,900 won

Inquiries: 82-1599-7788 [www.arex.or.kr](http://www.arex.or.kr)

- Seoul Station City Airport Terminal

- Location: AREX Seoul Station B2
- Services: flight and baggage check-in services, immigration check (for travelers boarding international flights at Incheon Int'l Airport on the same day)
- Operating hours: flight check-in (Korean Air, Asiana Airlines, and Jeju Airlines), baggage check-in 05:20- 19:00 (The boarding procedure must be completed three hours prior to the time of departure.)
- Departure immigration check: 07:00-19:00  
Passengers that don't use the services at Seoul Station City Airport Terminal can also take the express train.
- Tel: 82-1599-7788

- City Airport Services

- Flight check-in: 1st Floor
- Check-in service hours:  
National carriers: 05:20-18:30 / Jeju Air, foreign airlines: 05:10-18:30  
Airlines available for check-in at City Airport: Korean Air, Asiana Airlines, Qatar Airways, Singapore Airlines, Jeju Air, Thai Airways, Air Canada, Philippine Airlines, MIAT Mongolian Airlines, China Eastern Airlines, Shanghai Airlines, China Southern Airlines, Japan Airlines, KLM Royal Dutch Airlines, Delta Airlines, United Airlines
- Departure immigration check: 2nd Floor
- Service hours: 06:00-18:30
- Required documents: boarding pass, passport
- Tel: 82-2-551-0077~8 Web: [www.calt.co.kr](http://www.calt.co.kr)



## Driving (Getting a driver's license)

### 1 Converting a Foreign Driver's License to a Korean License

A driver's license issued by an appropriately-empowered foreign authority may be exchanged for a Korean driver's license, by providing required documents including a certificate from the embassy of your home country and after undergoing a physical exam and taking a written test.

※ To check if you need to take a written test, see the List of Countries Having a Reciprocal Driver's License Agreement with Korea at the website of the Road Traffic Authority Driver's License Examination Office ([dl.koroad.or.kr](http://dl.koroad.or.kr)).

Only unexpired full licenses may be exchanged. Temporary licenses, learner's licenses, provisional licenses, probationary licenses or driving permits or certificates are not acceptable for exchange.

<b>Documents Required</b>	<ol style="list-style-type: none"> <li>1. Foreign driving license (The foreign driver's license is surrendered at the time of receiving a Korean license. The foreign driver's license will be returned when the license holder submits his/her passport and plane ticket before leaving the country.)</li> <li>2. A certificate in Korean or English, issued by your country's embassy in Korea or by the Korean embassy in the license issuing country, proving the authenticity of the license <ul style="list-style-type: none"> <li>※ The certificate from an embassy does not have to be notarized.</li> <li>※ If the driver's license or certificate does not contain the date of issuance and a date of expiration, provide a driving record or an equivalent document with the date of issuance and the date of expiration.</li> </ul> </li> <li>3. An entry/exit record issued by the immigration authority and the passport <ul style="list-style-type: none"> <li>※ The entry/exit record and the stamps on the passport should show that you stayed in the license-issuing country for at least 90 days.</li> </ul> </li> <li>4. ID card <ul style="list-style-type: none"> <li>※ Korean citizens: ID Card, passport or any other valid, government-issued identification document (Korean citizens here refer to those who are registered as residents pursuant to Article 6 of the Resident Registration Act)</li> <li>※ Foreign nationals: passport and alien registration card</li> <li>※ Overseas Koreans: passport and domestic residence report Card</li> <li>※ Foreign nationals who are not registered as an alien resident and are in Korea for less than 90 days cannot exchange their foreign license for a Korean license (They are, however, allowed to take the regular driver's test including the road test.)</li> </ul> </li> <li>5. 3 color photos (for the size of the photo and other details, see the Road Traffic Authority Driver's License Examination Office's website)</li> </ol>
<b>Fees</b>	<ul style="list-style-type: none"> <li>- Foreigners, foreign citizenship holders of countries that recognize the Korean driver's license: 12,500 won</li> <li>- Foreigners, foreign citizenship holders of countries that do not recognize the Korean driver's license: 20,000 won</li> </ul>
<b>Others</b>	<ul style="list-style-type: none"> <li>* Foreign driver's license is exchanged only for a class-2 regular license.</li> <li>* Foreign driver's licenses issued in countries having a reciprocity agreement with Korea (Belgium, Poland, Spain and Italy) may be exchanged for licenses of the same class and type.</li> </ul>

\* License exchange applications must be submitted personally by applicants.

List of Countries Having a Reciprocal Driver's License Agreement with Korea (National Police Agency Notice, May. 15, 2015)

- Visit the website of the Road Traffic Authority Driver's License Examination Office.

1. Countries where Korean licenses are exchanged for local ones without requiring test-taking.
2. Regions with an independent driving license system such as Hong Kong, Taiwan are considered countries for the purpose of driver's license conversion.
3. If, after the enactment of this Notice, Korean licenses are newly recognized or no longer recognized in a country, and if the Korean police is notified of such change, the recognition of licenses of this country in Korea will be based on this updated rule.

#### Others

- \* Licenses from countries with a reciprocity agreement with Korea: physical examination only
- \* Licenses from countries without a reciprocity agreement with Korea: physical examination and a written test (40 multiple choice questions) in Korean, English, Chinese or Russian
- \* Licenses from countries without a reciprocity agreement with Korea: physical examination and written test (40 multiple choice questions) in Korean, English, Chinese, Japanese, Thai, Vietnamese, Russian, Indonesian, Mongolian, Cambodian or Indonesian (Tagalog)
- \* A written test is administered for applicants with a license from the states of Oregon and Idaho (U.S.) although there is a reciprocity agreement with Korea.

Drivers whose Korean driver's license was cancelled in the past must receive six hours of traffic safety education - Visit the website of the Road Traffic Authority Driver's License Examination Office.



## 2 International Driver's License

International driver's license issued by a signatory of the Geneva Convention may be used for one year in Korea from the date of entry. From January 1, 2002, international driver's license issued by a signatory of the Vienna Convention has also been allowed, and may also be used for one year from the date of entry.

• KOROAD Driver's License Call Center:

82-1577-1120, 82-2-2230-6114

[www.koroad.or.kr/en\\_web/index.do](http://www.koroad.or.kr/en_web/index.do) (English)

[dl.koroad.or.kr/license/cn/index.jsp](http://dl.koroad.or.kr/license/cn/index.jsp) (Chinese)

[dl.koroad.or.kr/license/jp/index.jsp](http://dl.koroad.or.kr/license/jp/index.jsp) (Japanese)

### 3 Exchanging a Foreign Driver's License to a Korean One

Required documents (D-8, F-3 holders)	D-8 visa holder	<ol style="list-style-type: none"> <li>Foreign driver's license A Korean driver's license cannot be issued if the period of validity on the original foreign driver's license has expired.</li> <li>Certificate of entry and exit and passport (The license issuance date or renewal date should be stated.) ※The certificate of entry and exit may also be issued at KOTRA's Investment Consulting Center (Processing fee: 2,000 won) ※For licenses issued from a third country, license holders must provide proof that he/she has stayed in the country of issuance for 90 days or longer.</li> <li>Alien registration card or domicile registration card ※Short-term residents of less than 90 days are not eligible for the license exchange service, but may obtain a Korean license by taking a written test.</li> <li>Certificate from home country's embassy or and apostille proving the authenticity of the applicant's foreign driver's license - Certificates issued by and embassy are valid for one year from the date of issuance. In the case that the period of validity stated on the certificate is less than one year, the stated period shall be applied. - The apostille shall be valid until the date designated by the Lottery. ※As the embassies of the U.S., U.K., Russia, Finland, Uzbekistan and Hong Kong do not issue a certificate, applicants from these countries should submit an apostille. ※The certification from an embassy or an apostille needs to be in Korean or English to be considered valid.</li> <li>Three color photos (3cm x 4cm) Identification photo taken within the past six months</li> <li>Physical exam report KOTRA's Investment Consulting Center does not provide physical exams. Please visit a designated hospital for a physical exam and submit the report.</li> <li>License issuance fee: 7,500 won</li> </ol>
	For D-8 visa holders and their accompanying family members	<ol style="list-style-type: none"> <li>①~⑦ and the original copy of the visa holder's certificate of alien registration ※ Accompanying family members' refers to the spouse and unmarried children (aged 18) of D-8 visa holders. ※The certificate of confirmation of alien registration can be issued at KOTRA's Investment Consulting Center (Handling fee: 2,000 won).</li> </ol>
Fees	Physical exam (varies according to hospital), license issuance fee (7,500 won)	
Others	<p>Korean license issued in exchange for a foreign license is limited to the Type 2 regular license.          ※Exception or proxy registration is not allowed for citizens from countries with a reciprocity agreement with Korea- the foreign license will be collected.          ※The foreign license will be returned when departing from Korea (the license holder must visit in person within three years.).</p>	

## 4 Foreigners Without a Driver's License

The same procedure for obtaining a new driver's license for local Koreans applies to foreigners who have not obtained a license from their home country.

※For more information, visit the Road Traffic Authority website or contact the Customer Center

• KOROAD Driver's License Call Center:

82-1577-1120, 82-2-2230-6114

[www.koroad.or.kr/en\\_web/index.do](http://www.koroad.or.kr/en_web/index.do) (English)

[dl.koroad.or.kr/license/cn/index.jsp](http://dl.koroad.or.kr/license/cn/index.jsp) (Chinese)

[dl.koroad.or.kr/license/jp/index.jsp](http://dl.koroad.or.kr/license/jp/index.jsp) (Japanese)



### Tip Useful websites

■ **Dugeun Dugeun Driving** [wonderfuldriving.com](http://wonderfuldriving.com)

This free online education website is designed to help multicultural families residing in Korea obtain a driver's license. The website is offered in various languages including English, Japanese, Chinese, Vietnamese, Thai, and Indonesian, and allows users to take a driver's license education course online in multiple languages. Not only does it describe the procedures to follow to obtain a driver's license in great detail but it also offers video lessons for written examination, motor function capability test, and road test.

■ **Road Traffic Authority** [www.koroad.or.kr/en\\_web/index.do](http://www.koroad.or.kr/en_web/index.do)

The website offers information on the foreign driver's license and international driver's license among other things, as well as information on safe driving in Korea in such sections as Korea's Traffic Environment, Things You Should Know, and Expressway Driving Guide.



## Purchasing and registering a vehicle



When purchasing a vehicle in Korea, foreigners must submit their alien registration card that states his/her place of residence.

### 1 Documents Required for Registering a New Vehicle

- Certificate of residency
- Certification of domicile
- Certificate of seal impression for foreigners
- Korean driver's license
- Personal seal
- Copy of company sponsored health insurance (Proof of income)

\*Foreigners must have resided in Korea for at least two years.

\*Foreigners that hold F-4 or F-5 visas are eligible for monthly installment plans when purchasing a vehicle.

### 2 Registering a Vehicle - Certificate of residency

A new vehicle should be registered upon purchase. On request, a car manufacturer or dealership can handle vehicle registration. Failure to register the vehicle will result in imprisonment for up to two years or a fine up to five million won.

- **Where to register:** The vehicle registration department of the Si/Gun/Gu office.
- **Required documents for the registration of a new vehicle**
  - Application for registration
  - One copy of vehicle manufacture certificate (for newly manufactured vehicles) or one copy of import declaration certificate (for imported cars)
  - Certificate of valid liability insurance
  - Temporary driving permit and number plates (front and back plates)
  - Registration tax receipt
  - Alien registration card, certificate of domicile registration
- **Documents required for car disposal**
  - Application form for cancellation of vehicle registration
  - Certificate of vehicle registration
  - Receipt of vehicle (issued by auto junkyard) or confirmation of theft report (when vehicle is stolen)
  - License plates (front and back plates) and seal
  - Alien registration card, certificate of domicile registration

※Deadline for cancellation of vehicle registration

The deadline for cancellation of vehicle registration is one month from the date of vehicle disposal, and failure to cancel registration within this period will result in a fine.

※Visit Seoul Global Center Website ([global.seoul.go.kr](http://global.seoul.go.kr)) for more

information and details regarding the purchase of new and used vehicles, transfer of ownership and other vehicle related questions.



## Auto insurance

Under Korean law, auto insurance is compulsory and owners are required to purchase auto insurance in order to own and operate a vehicle.

### ■ Insurance Companies That Sell Auto Insurance to Foreign Drivers

- **AIG Korea**  
Tel: 82-1544-2792, 82-2-2260-6800  
Web: [www.aiggeneral.co.kr](http://www.aiggeneral.co.kr)
- **MG Direct**  
Tel: 82-1588-5959  
Web: [www.mgcar-direct.com/index.html](http://www.mgcar-direct.com/index.html)
- **KB Insurance**  
Tel: 82-1544-0800, 82-1544-4357(Foreign)  
Web: [www.kbinsure.co.kr](http://www.kbinsure.co.kr)
- **Samsung Fire & Marine Insurance**  
Tel: 82-1588-5114, 82-2-2119-2000  
Web: [www.samsungfire.com](http://www.samsungfire.com)
- **Hyundai Marine & Fire Insurance**  
Tel: 82-1588-5656  
Web: [www.hi.co.kr](http://www.hi.co.kr)
- **Hanwha General Insurance**  
Tel: 82-1566-8000, 82-2-316-7000  
82-1566-8000, 82-2-316-7000



## Tip Purchasing a car

There are no special restrictions or conditions for foreigners seeking to purchase a car in Korea. If purchasing by cash, only the purchaser's ID (alien registration card) is required.

- **Purchasing by installments:** As with Korean citizens, the possession of an income certificate is important for foreign nationals as well. When purchasing by installments, the following documents are required: alien registration card, seal certification, driver's license, and income certificate; as well as any one of the following: company medical insurance, invoice of withholding tax, property tax certification. Installment purchase is relatively easier for F4, F5 visa holders compared to other visa types.
- **Lease:** Only Korean citizens living in Korea and aged over 20 are eligible for car lease. Therefore, if a foreigner wishes to register for car lease, he/she will need a residential permit and will be subject to a rather meticulous evaluation.

## Tips for driving in Korea



### 1 Bus-only Lanes

Bus-only lanes, reserved for the exclusive use of authorized buses, are special travel lanes created to speed and promote the flow of bus traffic. To avoid obstructing the traffic of other types of vehicles, on highways, bus lanes are in the middle of a road, and in regular roads, at the outer side of a road. Although only buses meeting certain conditions are authorized to use bus-only lanes, in some cases, other vehicles with multiple passengers may be allowed to use them as well.

An unauthorized vehicle caught driving on a bus-only lane is fined. See the list of vehicles authorized to use bus-only lanes below:



Road type	Vehicles authorized to use bus-only lanes	
	Highways	Other roads
Bus-only lane	9-passenger vehicles or multi-passenger vehicles (passenger vehicles and multi-passenger vehicles that seat no more than 12 should have at least six passengers on board)	<ol style="list-style-type: none"> <li>1. Large-size multi-passenger vehicles seating 36 or more passengers</li> <li>2. Business multi-passenger vehicles seating less than 36</li> <li>3. School buses operating for transportation of children, carrying a registration.</li> <li>4. The following multi-passenger vehicles designated by the Commissioner of the local policy agency to facilitate traffic movement: <ol style="list-style-type: none"> <li>A. Multi-passenger vehicles for school children or commuters operating on a fixed route and seating at least 16.</li> <li>B. Multi-passenger vehicles deemed necessary, for the transportation of participants of an international conference, etc.</li> <li>C. Multi-passenger vehicles for foreign tourists operated by a chartered bus operator and which seat 25 people or more.</li> </ol> </li> </ol>

\*For more detailed information, see the Enforcement Decree of the Road Traffic Act.

## 2 Hi-pass



Hi-pass is an electronic toll payment system operated by the Korea Expressway Corporation to alleviate bottlenecks caused by cars slowing down and stopping at a tollgate to pay the toll. Drivers with a Hi-pass device and card installed inside the vehicle do not need to slow down at the tollgate and can just drive through it. The toll is automatically debited from the prepaid Hi-pass card (which, therefore, needs to be topped up beforehand). In the case of a postpaid card affiliated with a credit card, tolls are paid later once a month on the credit card due date.

Cars without a Hi-pass device, passing through a Hi-pass lane, become photographed, and their drivers have to pay the toll plus a fine. Therefore, make sure to enter the right lane at a tollgate.



## 3 Permissive Left Turn

In Korea, most traffic lights have a dedicated left turn light, and drivers must make a left turn only when this signal lights up. But, if you see a sign like the one on the left at a crossroads, this means that you may make a left turn, even if there is no left turn light. Make your left turn when the traffic light is green, after checking for cars coming from the left and right.



#### 4 How to Respond to a Traffic Accident

Foreign drivers are recommended to keep the phone numbers of their Korean friends, lawyer, car insurance company, and their local embassy in case they get into an unexpected traffic accident. It is also crucial to carry a camera to record the scene of the accident. A car should be parked on the roadside immediately after a traffic accident occurs. You may call 119 for emergency aid or an ambulance. You should report an accident within three hours in a city or within 12 hours in a rural area by phone (112 without the area code) or by visiting a police station.

The driver should immediately notify the car insurance company of such information as the date and place of the accident, degree of damage, circumstances of the accident, evidence, and witnesses. You should seek advice from the insurance company to avoid unfair liability or penalties arising from damage of evidence.

When in need of interpretation service or other assistance, call the Seoul Global Center (82-2-2075-4130~1). If the Center does not offer services in the language you speak, call the BBB, which offers free interpretation service in 17 languages (82-1588-5644 / 82-2-725-9108~9).



#### **Tip** Violation points system

Violation points are imposed on drivers depending on the degree of the violation and damages. The driver's license may be revoked or suspended when the total accumulated points reach a certain level. You may check the violation points for traffic violations and traffic accidents at the Road Traffic Authority website.

• KOROAD Driver's License

Tel: 82-1577-1120, 82-2-2230-6114

Web: [www.koroad.or.kr/en\\_web/index.do](http://www.koroad.or.kr/en_web/index.do) (English)

[dl.koroad.or.kr/license/cn/index.jsp](http://dl.koroad.or.kr/license/cn/index.jsp) (Chinese)

[dl.koroad.or.kr/license/jp/index.jp](http://dl.koroad.or.kr/license/jp/index.jp) (Japanese)